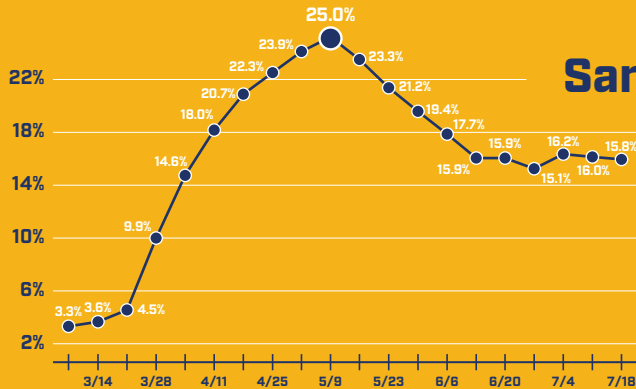


San Diego and Imperial Counties Community Colleges

WE CAN HELP YOU TRAIN FOR PANDEMIC-RESILIENT CAREERS

New research reveals the most high-demand, high-wage jobs in the region; laid-off or displaced workers can **retrain or upgrade job skills in as little as two years for just \$46 per credit.**

UNEMPLOYMENT SKYROCKETED DURING THE PANDEMIC



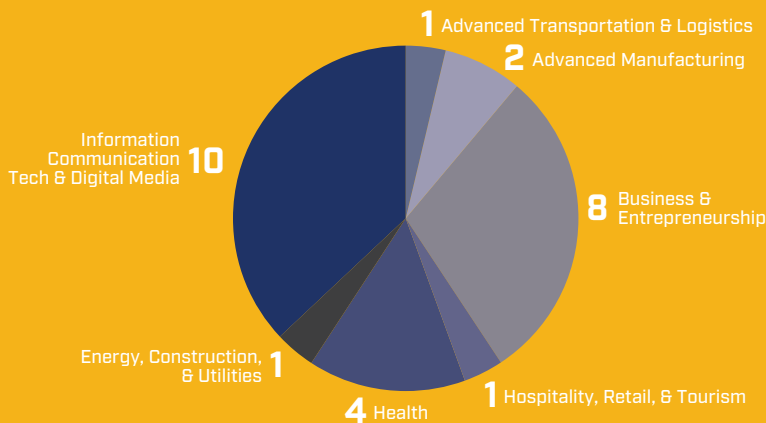
San Diego County Unemployment Rate

25%

Regional unemployment hit an **all-time high** in **May** of this year

Source: Biweekly data from Applied Geographic Solutions, Inc., Thousand Oaks, California, Weekly Release June 23, 2020 (for data until June 13) and Weekly Release July 27, 2020 (after June 13)

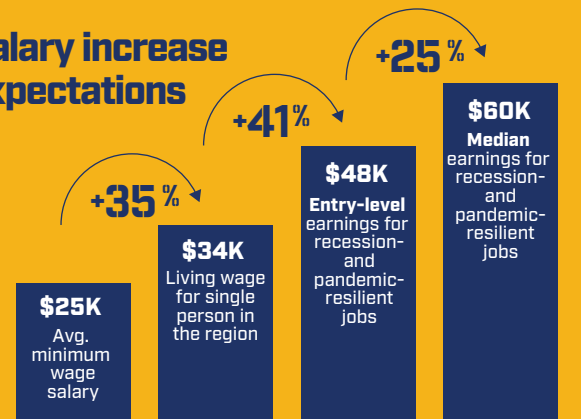
27 PANDEMIC-RESILIENT CAREERS ACROSS 7 JOB SECTORS



THRIVING JOBS AND SALARY GROWTH

Career Education provides training for displaced or minimum wage workers.

Salary increase expectations



Data based on jobs that experienced stability or growth during 2007-2009 recession and have been pandemic resilient

PANDEMIC-RESILIENT TRAINING PROGRAMS ENROLLING NOW

- | | | | |
|-----------------------------|------------------------|--------------------------------|------------------------|
| Accounting Specialist | Food Service Manager | Network Administrator | Retail Sales Manager |
| Computer Systems Analyst | Medical Assistant | Software Application Developer | Office Manager |
| Computer Support Specialist | Construction Manager | Property, Real Estate, and | Web Developer |
| Cybersecurity Specialist | Computer Game Designer | Community Association Manager | Database Administrator |

COMMUNITY COLLEGES

SAN DIEGO & IMPERIAL COUNTIES

CAREER EDUCATION

For information on Pandemic-Resilient Careers and Career Education opportunities near you, please visit careered.org/back-2-work.

All information based on San Diego-Imperial Center of Excellence for Labor Market Research Oct. 2020

CareerEd.org